

Installation

Planks are to be installed to a suitable surface as per AUS/NZ 1884 standards with full spread **HARD SET** quality acrylic base adhesive. **We recommend MAPEI Ultra Bond Eco 300.**

1. Remove thresholds and baseboards before you measure the room to see how much flooring to purchase. Your surface to cover will be the length times the width of the room plus the area of any nooks and closets. To this total surface, you will need to add 10 per cent for trimming.
2. Strip any existing flooring if necessary. If the existing floor surface is solid and fairly smooth you may choose to skip this step. If you remove carpet or old vinyl, you may need to use a power scraper and citrus-based solvent to remove old adhesive without omitting corners and crevices.
3. Use patching compound to fill in any cracks and holes in your subfloor. Work the compound into the hole with a putty knife and level it off. Once you have a smooth, even surface, sweep and mop it thoroughly. The smoother the subfloor, the better vinyl planks will bond to it. Finally a coat of primer is recommended to seal extremely porous subfloors or difficult to bond to surfaces.
4. Planks are to be **installed parallel to the wall that is the main line of sight** in the room (usually this is the wall opposite the room's main entrance). Measure to determine the centre of the room and adjust the centre point so that planks are evenly distributed on each side. Mark this straight centreline on the floor using chalk line or fine felt pen. Planks of first and last rows may need to be cut to ensure even layout throughout the room.
5. Spread the adhesive with the recommended notched trowel. Use only Advantage Flooring's recommended adhesives and closely follow instructions for their use. Wait the appropriate time according to the manufacturer's directions before commencing to lay flooring.
6. Starting on your centreline, be very careful to line up the first plank perfectly straight since all the remaining planks will key off the first.
7. Cut a vinyl plank in half to begin your second row. Use a vinyl plank cutter (recommended) or a utility knife and square to cut the plank at a 90-degree angle to its length. Staggering the vinyl planks creates a more authentic appearance; commence subsequent rows using the cut-offs from previous rows, alternating them randomly. Pieces should be a minimum 20cm (8") in length, as should the stagger from one row to the next.
8. Use a floor roller to ensure all the planks are firmly bonded to the floor and install mouldings. Locate any gaps between planks; if any, use a putty knife to fill gaps with wood putty and wipe away any excess.
9. Should there be adhesive residue on the surface of the floor, use a clean white cloth dampened with water if adhesive is wet and acetone or mineral spirits if it is dry to wipe it away.

PLANKS

Features and Benefits

- ◆ Naturally Water Resistant
- ◆ Rich Colours and Great Versatility
- ◆ Easy to Install and Maintain
- ◆ Stain/Wear Resistant
- ◆ Commercial Rating

Product Information

Construction:	Dry Back LVP-virgin PVC
Finish:	UV Cured Polyurethane
Abrasion resistance:	General Commercial use
Width:	152.4 mm
Length:	1219 mm
Total Thickness:	3 mm
Wear Layer:	.55 mm
Interlayer:	Fibreglass Grid
Metres per carton	3.345 sqm
Weight per box	18.06 kg
Warranty:	Residential 30 Year Commercial 10 Year

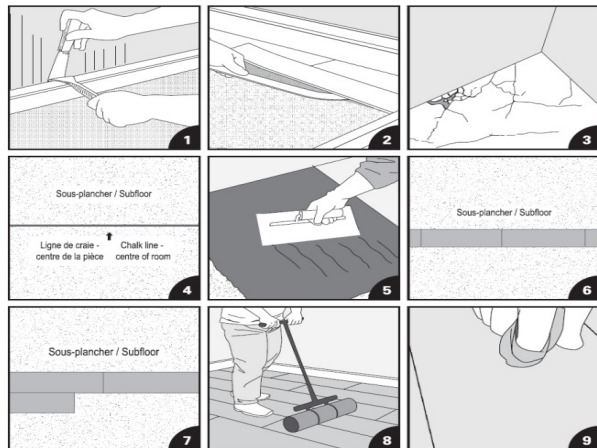
RECOMMENDED INSTRUCTIONS FOR DRY BACK LVP FLOORING

Acclimation:

Acclimation is a recommended procedure prior to installation of Luxury Vinyl Plank flooring either on the jobsite or in like job site conditions, as this will make the installation easier. Store the UNOPENED BOXES in the room where the floor is to be installed for at least 48 hours prior to installation. Heating/air-conditioning must be on and set between 18.3-29.5°C.

Tools and materials required:

- Safety Glasses
- Measuring tape and square
- 100lb Floor Roller
- Utility Knife
- Chalk line or straightedge
- Fine Felt pen
- Adhesive
- Trowel (as per adhesive manufacturer's recommendations)
- Primer (if necessary)
- Acetone (if necessary)
- Vinyl Tile Cutter (Optional)
- Wood Putty (if necessary)
- Embossing Leveller (if necessary)



Suitable Substrates:

- Concrete (dry and smooth on all grade levels with vapour emissions up to 5 lb (2.3kg))
- Approved underlayment grade plywood
- Ceramic tile, terrazzo marble
- Radiant heated substrates that will not exceed a maximum floor temperature of 27°C.

Do not install over:

- Single Layer wood floors
- Existing plank floors that are on below grade concrete
- Existing cushioned-backed vinyl flooring
- Asphalt plank or tile
- Carpet
- Self Adhering plank or tile
- Laminate or other floating flooring
- Adhesive residue

Job conditions/Preparation:

- Substrate must be free of dust and debris.
- Substrates should be secure, dry, clean, smooth and free from paint, varnish, wax, oils, solvents and other foreign matter.
- All mouldings such as wall base and/or quarter round should be removed for best results.
- Any looseness of the substrate must be secured.
- Remove 100% of any adhesive residue.
- Ensure that all boxes are of the same product and mix planks from different boxes for best results.
- High spots should be levelled and low spots should be filled with a proper material to ensure substrate is level within 4.7mm in 3m (3/16" in 10ft).
- When installing over an existing resilient flooring material an embossing leveller may be required to prevent the existing material pattern from telegraphing through the new material.